



# BAG WASH



## BRICK SIZE:

230 x 76 x 70mm nominal

## UNITS PER m<sup>2</sup>:

48.5

## PACK SIZE:

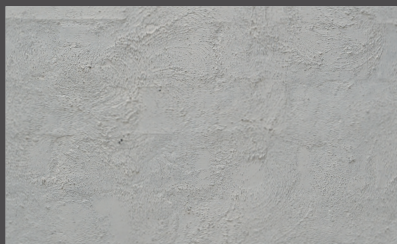
624

## PRICE PER BRICK:

\$0.42 ex GST

## PRICE PER m<sup>2</sup>:

\$20.37 ex GST



## TYPICAL PROPERTIES

Dry Weight (Per Unit) Average:	1.80kg	Compression Strength Average:	53mpa
Finished Wall Dry Weight Average:	122kg	24 Hour Cold Water Absorption Average	11.7%

## IMPORTANT NOTICE

### Choosing Bricks

Brick will vary from brochures and other samples or houses you may have seen. It is important you view your bricks on site prior or at commencement of laying.

### Consistency

Bricks are a natural product therefore they will vary in colour and texture from batch to batch.

### Blending

Bricks must be blended off multiple pallets to avoid an inconsistent finish.

**Please refer to documents TB1, TB2 and TB3 for all laying and cleaning requirements on our website: [www.clay-bricks.co.nz](http://www.clay-bricks.co.nz)**

### Quality

While every effort will be made to mitigate defects, because of the combination of natural elements, manufacturing and transportation clay bricks will have minor chipping and cracking, these are part of the brick.

### Inspection of Brickwork

Brick and Bricklaying should be viewed from a distance of 4 metres.



CLAY BRICK & PAVER  
MANUFACTURER'S ASSOCIATION