



Canterbury **Clay**Bricks



BRICK COLLECTION



PROUDLY
NEW ZEALAND
MADE

www.clay-bricks.co.nz

See inside for our full range of brick colours, sizes and textures. ►



Canterbury **Clay**Bricks

Canterbury Clay Bricks is a locally owned and operated family business that has been since its inception over 50 years ago. It is the largest manufacturer of kiln fired clay bricks in New Zealand.

We bring to you a range of modern yet timeless shades, in a collection utilising the rich local Canterbury clays. These clays create a host of warm natural finishes and colours that will add style and value to any home.



PROUDLY
NEW ZEALAND
MADE

Cover image features Oxford Smooth brick with rough mortar for a rustic look.





AORAKI

Give your home a modern edge with these on-trend shades. This mid-sized, wirecut brick has very versatile proportions and works well in all sized homes. Changing mortar colours will also enhance the overall aesthetics of your build with our Designer Range. Consider the Aoraki with white pointing to tone in and to create a more sophisticated feel. These are a slurry brick and a rolled mortar joint to finish is suggested.



AORAKI



ARROWSMITH



KAWEKA

MID SIZE: 230 x 120 x 70mm



CHARLESTON RUSTIC

The Classic Range offers you a variety of shades and textures on a standard size brick. Paired with the right roof and windows these multi toned rumbled finish bricks, give you a more rustic look.



COALGATE RUSTIC



CHARLESTON RUSTIC



HURUNUI RUSTIC



BURNSIDE RUSTIC

STANDARD SIZE: 230 x 76 x 70mm



AKAROA

Whilst these mono toned Classic Range bricks create a modern, crisp and clean look.

These neutral shades compliment well with most popular roof and window colours

STANDARD SIZE: 230 x 76 x 70mm



RUSSLEY



OHOKA



PURAU



AKAROA



ILAM

> HERITAGE BRICKS



SPRINGFIELD

The Heritage range presents a variety of different sizes and textures to give your home flexibility – offering a country farm house look or a modern townhouse style.

BLOCK SIZE: Springfield /
Glentunnel / Malvern / Harewood
290 x 160 x 70mm

MID SIZE: Culverden Rustic /
Mandeville
230 x 120 x 70mm



SPRINGFIELD



MALVERN



GLENTUNNEL



HAREWOOD



GLENTUNNEL



MANDEVILLE



CULVERDEN RUSTIC



MALVERN

> SMOOTH BRICKS



FENDALTON SMOOTH



OXFORD SMOOTH

These smooth bricks offer a classical smooth red look that stands the test of time. The mottled red of the Oxford will give your home plenty of character and add an 'industrial chic' look when used for internal walls.



FENDALTON SMOOTH



OXFORD SMOOTH



KAIRAKI SMOOTH

STANDARD SIZE: 230 x 76 x 70mm



ROMAN GREY BLEND

At 290mm wide and only 50mm high our Roman Range characteristically bring a very European feel to your Kiwi build. Named after the Romans that produced and laid this brick through the lands they conquered, they have now been brought back to the 21st century. In three neutral shades, this brick also works very well blending 2 or 3 different colours and with a flush or raked mortar you can achieve a myriad of finishes. Continuing this brick from your outside walls into an entry room internal wall or fire surround also elevates the elegance of a home.



WAKATIPU



ROTOITI



KARAPIRO

ROMAN SIZE: 290 x 50 x 70mm

PAINTER / RENDER BRICKS



WIRECUT PAINTER



SMOOTH PAINTER

Painter and Render bricks are another option for achieving the solidity of a brick home with the choice of paint and texture of your choice.

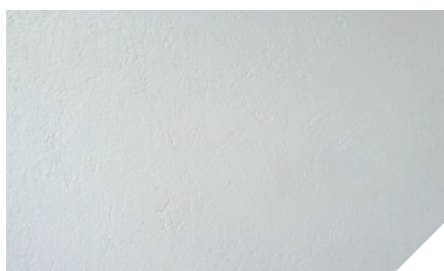
Mortar finishes determine the overall look on painted brick. A flush mortar works well with the textured face of the wirecut bricks whilst the smooth painter is enhanced by a raked joint to produce clean lines so the brick shape is still being accentuated.



SMOOTH PAINTER



WIRECUT PAINTER



PLASTER



BAG WASH

STANDARD SIZE: 230 x 76 x 70mm



Canterbury
ClayBricks

Canterbury Clay Bricks manufacturing plant is located close to its clay supplies within the surrounding hills of Darfield. A number of recycled products are used in the manufacture of the bricks including re-constituted brick and recycled glass. The kilns at the plant run on up to 95% of re-claimed fuels and oil further reducing any impact of manufacturing.



PROUDLY
NEW ZEALAND
MADE

Bricks are a blend of clays and water. The bricks are then formed, dried and kilned to produce a strong and durable end product. They are then hand blended and graded by staff to give a consistent finish.

Please refer to our website www.clay-bricks.co.nz for any product and laying information.



TECHNICAL SPECIFICATIONS

CHOOSING BRICKS

Brick will vary from brochures and other samples or houses you may have seen. It is important you view your bricks on site prior or at commencement of laying.

CONSISTENCY

Bricks are a natural product therefore they will vary in colour and texture from batch to batch.

BLENDING

Bricks must be blended off multiple pallets to avoid an inconsistent finish.

QUALITY

While every effort will be made to mitigate defects, because of the combination of natural elements, manufacturing and transportation clay bricks will have minor chipping and cracking, these are part of the brick.

MORTAR JOINTS

Joints should be between 7mm to 13mm. Joints could vary + or - 3mm (ie if your joint has an average size of 10mm joints should be 9mm to 12mm) this is a rule of thumb as bricks and laying will never be exact.

MORTAR JOINT FINISH

Consult your bricklayer on the desired finish, different methods will vary the appearance of your overall brickwork.

INSPECTION OF BRICKWORK

Brick and Bricklaying should be viewed from a distance of 4 metres.

CURING

Bricks will absorb moisture during the laying process, these can take weeks to dry. Mortar colours will vary depending on the weather conditions also, so this needs to be taken into consideration of the overall appearance.

MAINTENANCE

Do not water blast brickwork, if bricks need cleaning consult your supplier.

For other technical information please
consult our website: www.clay-bricks.co.nz

PLEASE NOTE: Due to photographic and printing variations, the true representation of the finishes and colours in this leaflet may vary. Kiln fired Clay Bricks are a natural product and therefore can vary in colour, texture and size.

Please ensure bricks are well blended to give a consistent overall finish. If possible make your final selection off a sample from the latest batch or contact our sales staff. Please refer to product specification sheets for laying requirements, product and cleaning.



Canterbury **Clay**Bricks

SALES CENTRE

189 Main South Road, Sockburn,
Christchurch 8042.

Phone +64 3 341 5036

Fax +64 3 341 5378

Email info@clay-bricks.co.nz

Web www.clay-bricks.co.nz



PROUDLY
NEW ZEALAND
MADE



CLAY BRICK & PAVER
MANUFACTURER'S ASSOCIATION

